



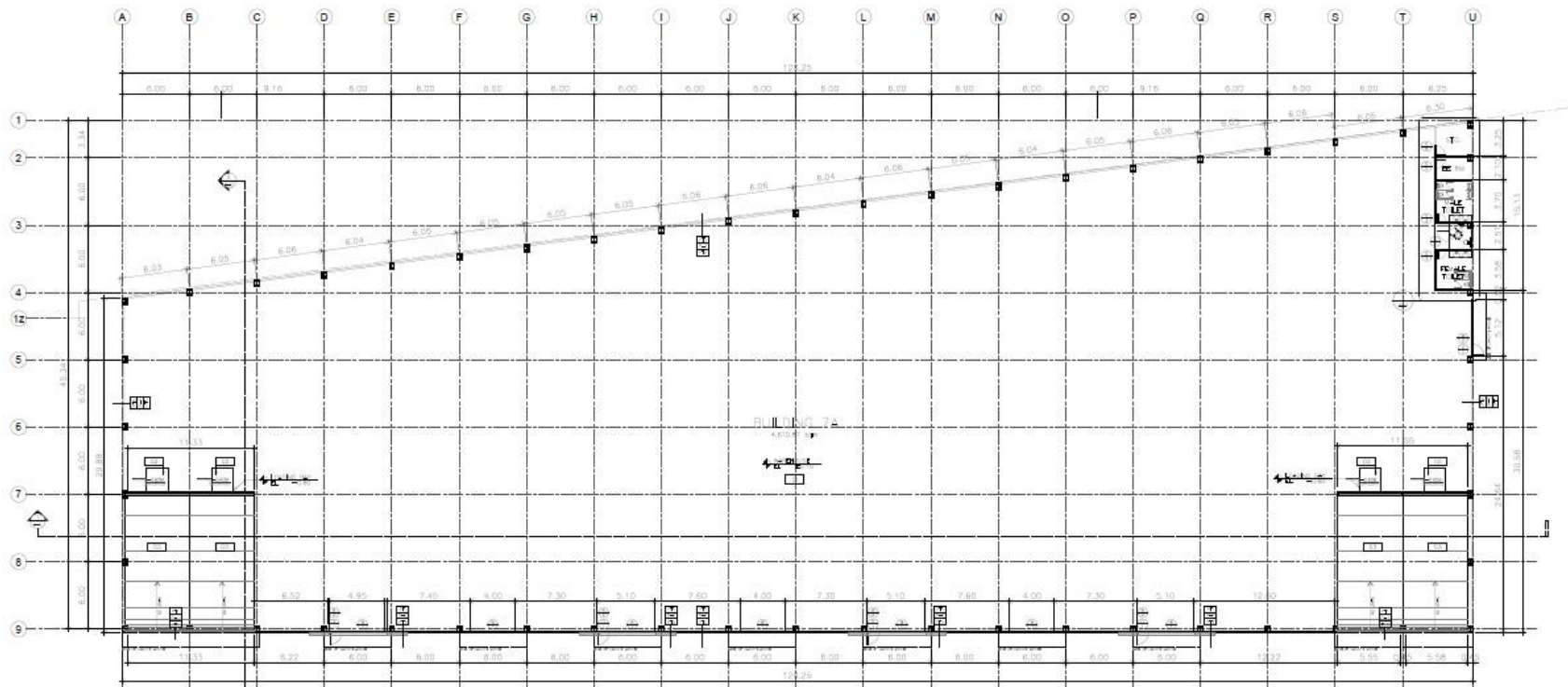
PROJECT UPDATE – BUILDING 7A
AUGUST 2022

PROJECT INFORMATION

Project: **A**Logis Calamba Building 7A

Location: **L**epanto Industrial Complex, **K**M54 **M**aharlika Highway, **C**alamba, **L**aguna

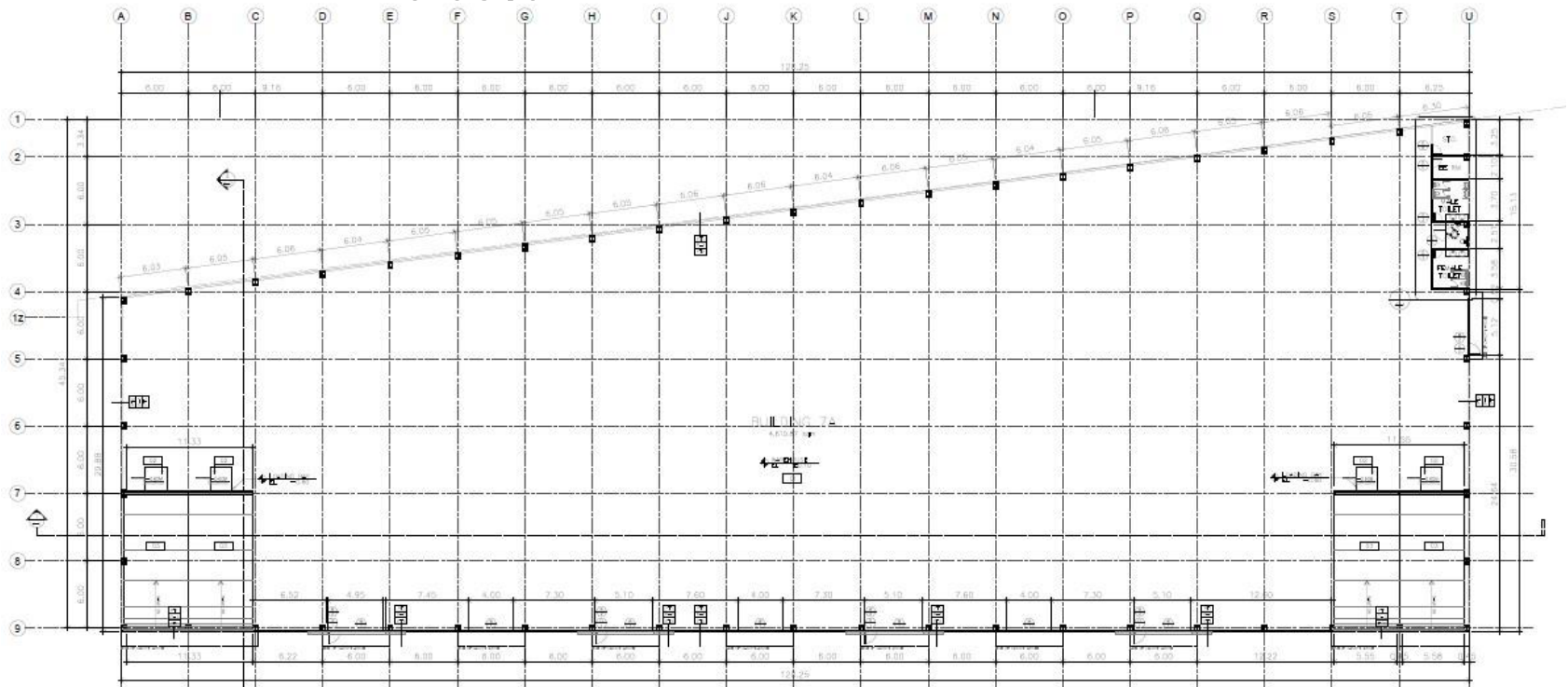
Total GLA: **4,610.87** square meters



PROGRESS TO DATE

Start of Construction: October 2021
End of Construction: February 2023

Assessment Date: July 5, 2022
Accomplishment To Date: 28.60%



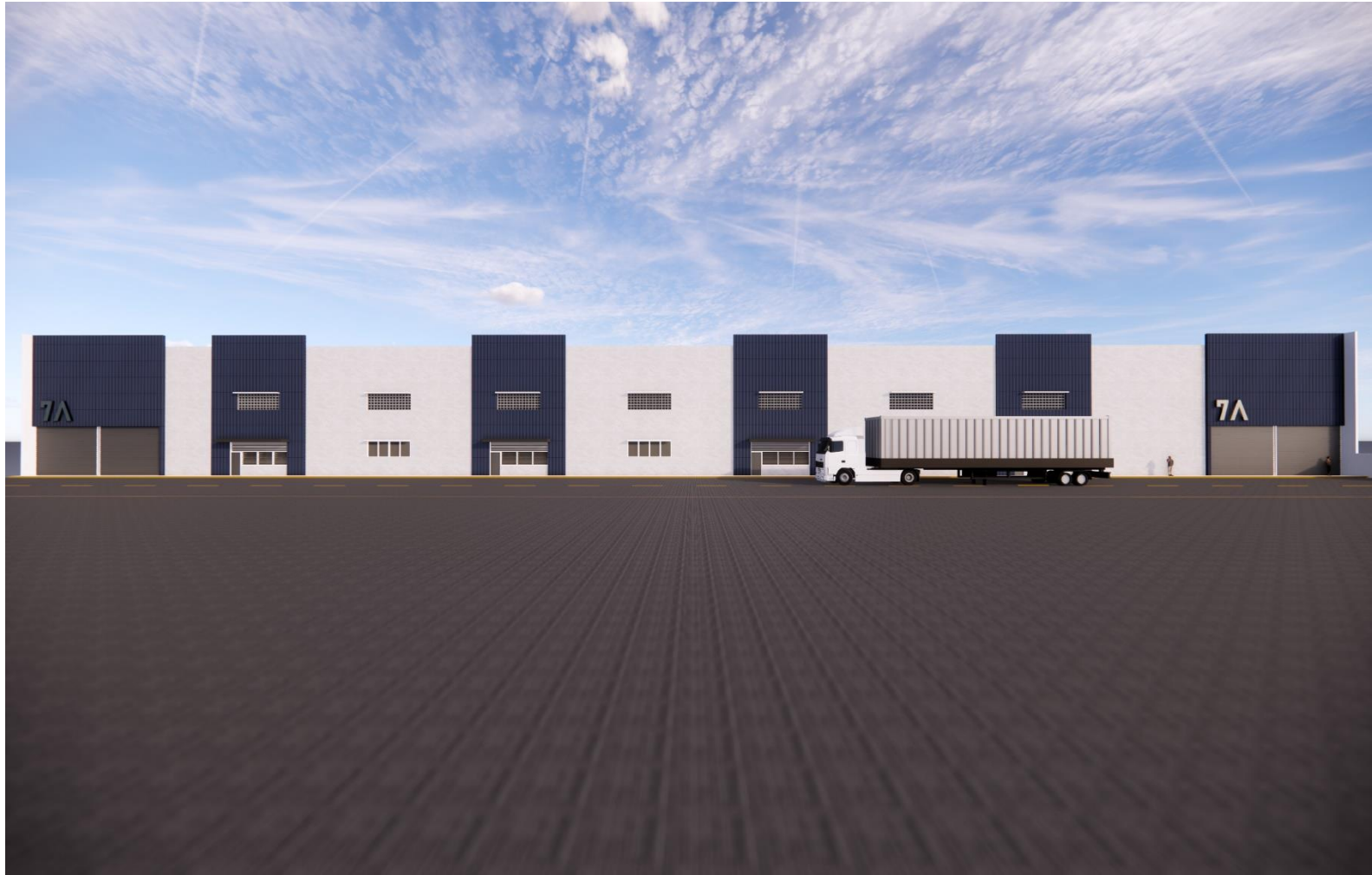
BUILDING SPECIFICATIONS

Features	Details
Gross Floor Area (Building)	4,610.87 square meters
Floor Load	Five (5) tons per square meter
Clear Height	Nine (9) meters
Building Envelope	150mm CHB Wall with 2 hours fire rating
Power Supply	<ul style="list-style-type: none"> -Basic Cabling Facilities for 240V, 3P, 25 kVA requirement -Individual metering with service entrance poles -Electrical outlets for ground floor -Provision for generator connection to MDP -Application to the Local Utility Provider shall be on the account of the Lessee
Water Supply	<ul style="list-style-type: none"> -Industrial and domestic supply from local utility provider -Individual meter for domestic and industrial supply -Individual compartment for back-up domestic, industrial and fire water supply in one cistern tank
Fire Protection	<ul style="list-style-type: none"> -Centralized water cistern with fire/jockey pump, Wet Stand pipe, Siamese Connection, Fire Alarm Notifier, FDAS -Fire line should be separate from industrial and domestic waterline -Fire retardant coating for the interior surfaces of the building -With fire retardant applied to exposed steel -Fire Exits

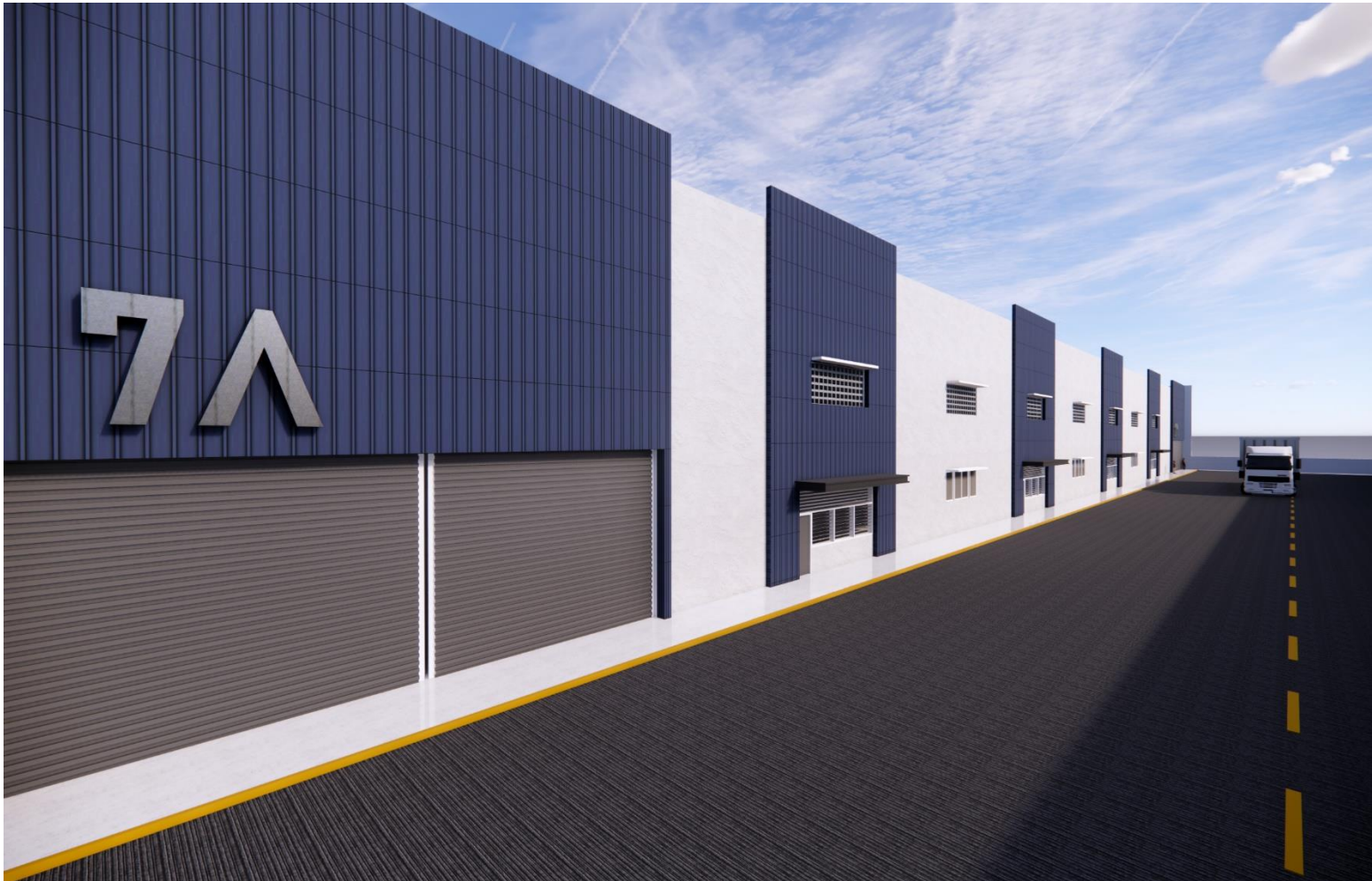
BUILDING SPECIFICATIONS

Features	Details
Restrooms	Male: 2 urinals / 2 toilet bowls / 2 wash bins Female: 2 toilet bowls / 2 wash bins PWD: 2 toilet bowls / 2 wash bins
Loading Bay	-Depressed loading area (Finish floor level with the road) -Four (4) loading bays with 4m (width) x 4.5m (height) roll up doors
Telecom	Outlet and cabling for internet and telecom thru Main Telephone Terminal Cabinet
Utility/Electrical Room	Provision for 2m x 2.5m utility/electrical room
Lighting	-High bay lighting for production area -Provision for sky light or wall light for natural illumination
Sewer	Tap to existing centralized sewage treatment plant by local utility provider
Drainage	Tap to existing drainage system of the facility
Ventilation	Roof Ventilators
Parking	Paved / Concrete
Others	-Perimeter lights and building lights -Ladder for roof access -Gravel bedding on easements

BUILDING PERSPECTIVE



BUILDING PERSPECTIVE



Accomplishment – Fabrication of I-Beams & Wide Flanges



Accomplishment – Erection of Steel Columns & Wide Flanges



END OF UPDATE