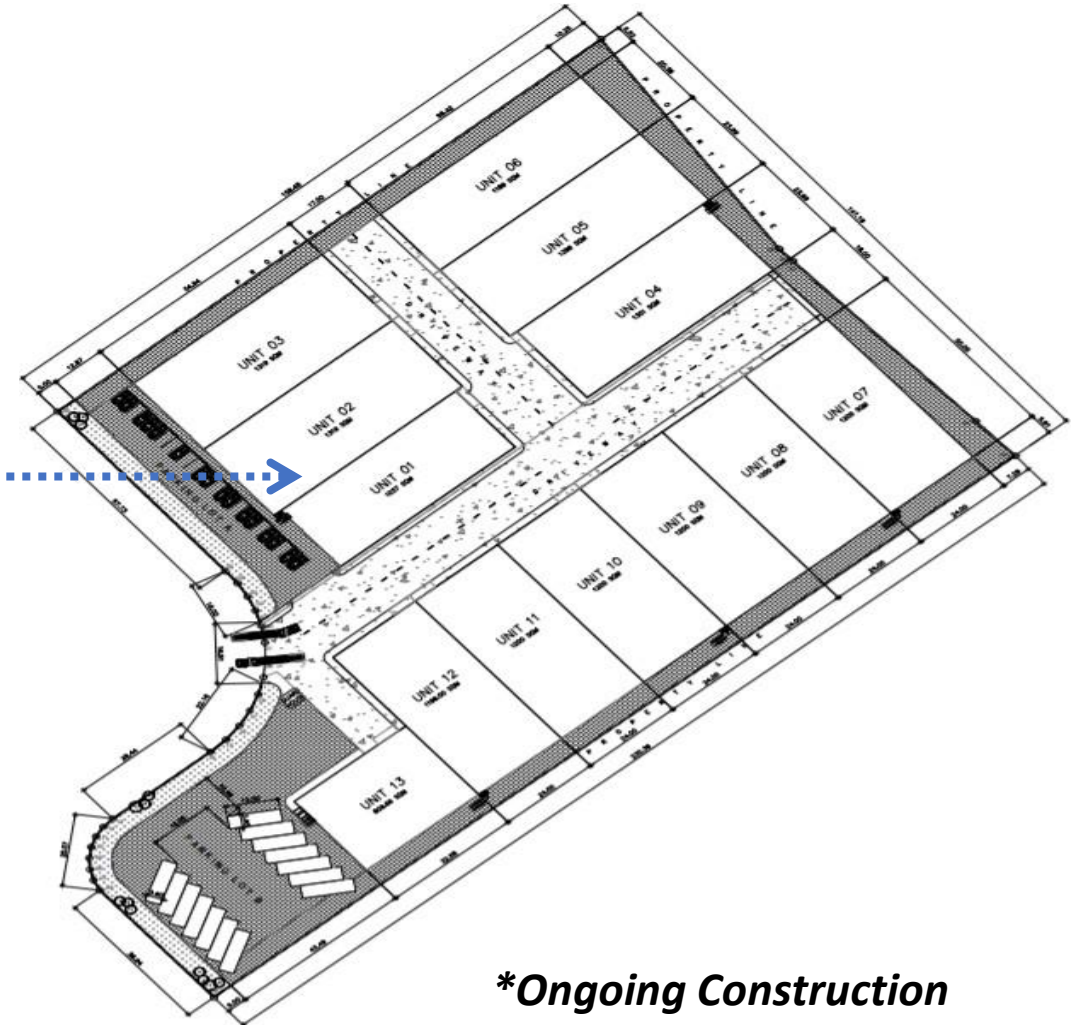
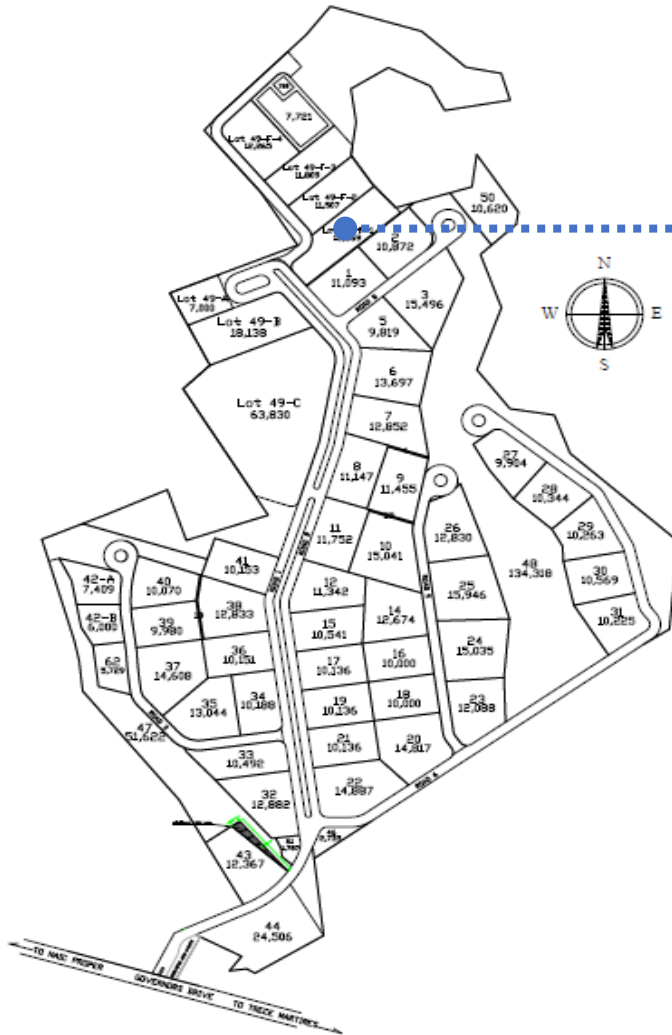


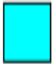


# Site Development Plan

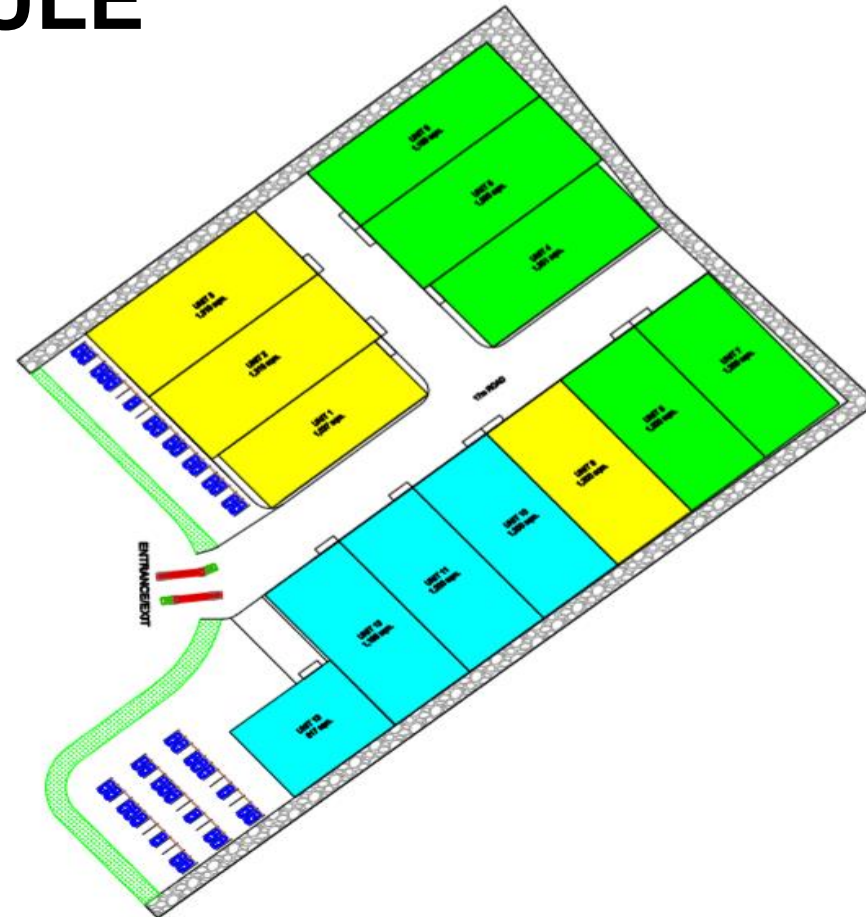


***\*Ongoing Construction***

# Building Specifications

## TURN OVER SCHEDULE

-  PHASE 1 (JANUARY 2021 - JUNE 2021)
-  PHASE 2 (MARCH 2021 - AUGUST 2021)
-  PHASE 3 (MAY 2021 - NOVEMBER 2021)



# Building Specifications

Features	Details
Lot Area	<b>26,876 square meters</b>
Gross FloorArea (Building)	<b>15,576 square meters</b> 13 units ranging from 817 sqm to 1,396 sqm All units must have the same floor elevation
Floor Load	<b>5 tons</b> per square meter
Clear Height	<b>9 meters</b> – from floor to shoulder <b>11 meters</b> – from floor to apex
Structural	Rafter/Roof beam should be of solid web construction Individual partition wall should be extended 1 m from the roof
Building Envelope	150mm CHB Wall with 2 hours fire rating
Power Supply	-Basic Cabling Facilities for 240V, 3P, 25 kVA requirement -Individual metering with service entrance poles -Electrical outlets for ground floor. Quantity as per minimum code requirements and size of the unit/room -Provision for generator connection to MDP
Fire Protection	-Centralized water cistern with fire/jockey pump, Wet Stand pipe, Siamese Connection, Fire Alarm Notifier, FDAS -Fire line should be separate from industrial and domestic waterline -Fire retardant coating for the interior surfaces of the building -With fire retardant applied to exposed steel

# Building Specifications

Features	Details
Restrooms	Each unit shall have the following: Male: 1 urinal / 1 toilet bowl / 1 wash bin Female: 1 toilet bowl / 1 wash bin PWD: 1 toilet bowl / 1 wash bin
Loading Bay	-Depressed loading area (Finish floor level with the road) -One for every unit – total of thirteen (13) areas - Each loading bay with 4 m (width) x 4.5 m (height) roll up doors
Telecom	-Outlet and cabling for internet and telecom thru Main Telephone Terminal Cabinet - Coordinate with local telecom provider on other requirements
Utility/Electrical Room	Provision for 2m x 2.5m utility/electrical room
Storage Room	Provision for a 2m x 2.5m storage room located near pump room
Lighting	-High bay lighting for production area -Provision for sky light or wall light for natural illumination
Water Supply	-Industrial and domestic supply from local utility provider -Individual meter for domestic and industrial supply -Individual compartment for back-up domestic, industrial and fire water supply in one cistern tank
Sewer	Tap to existing centralized sewage treatment plant by local utility provider

# Building Specifications

Features	Details
Drainage System	Tap to the Cavite Technopark's drainage system
Ventilation	Roof ventilators
Parking	Paved / Concrete
Guard House	-4 sqm guard house located at the entrance/exit gate, with toilet -Entrance/Exit gate with boom
Others	-Perimeter fence, 2 meters in height -For the front, 0.5m CHB plus 1.5m metal grill fence -Perimeter lights and building lights -Five units of ladder for roof access -Road markings -Gravel bedding on easements



# Building Perspective



# Building Perspective

