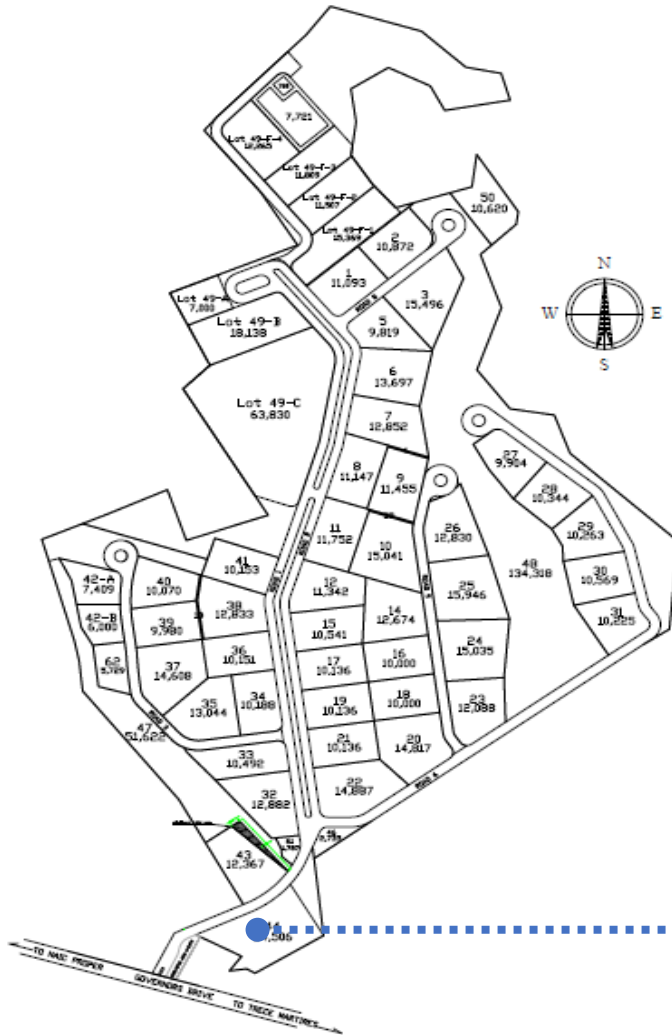


**A**Logis  
NAIC 1

# NAIC 1



# SITE DEVELOPMENT PLAN

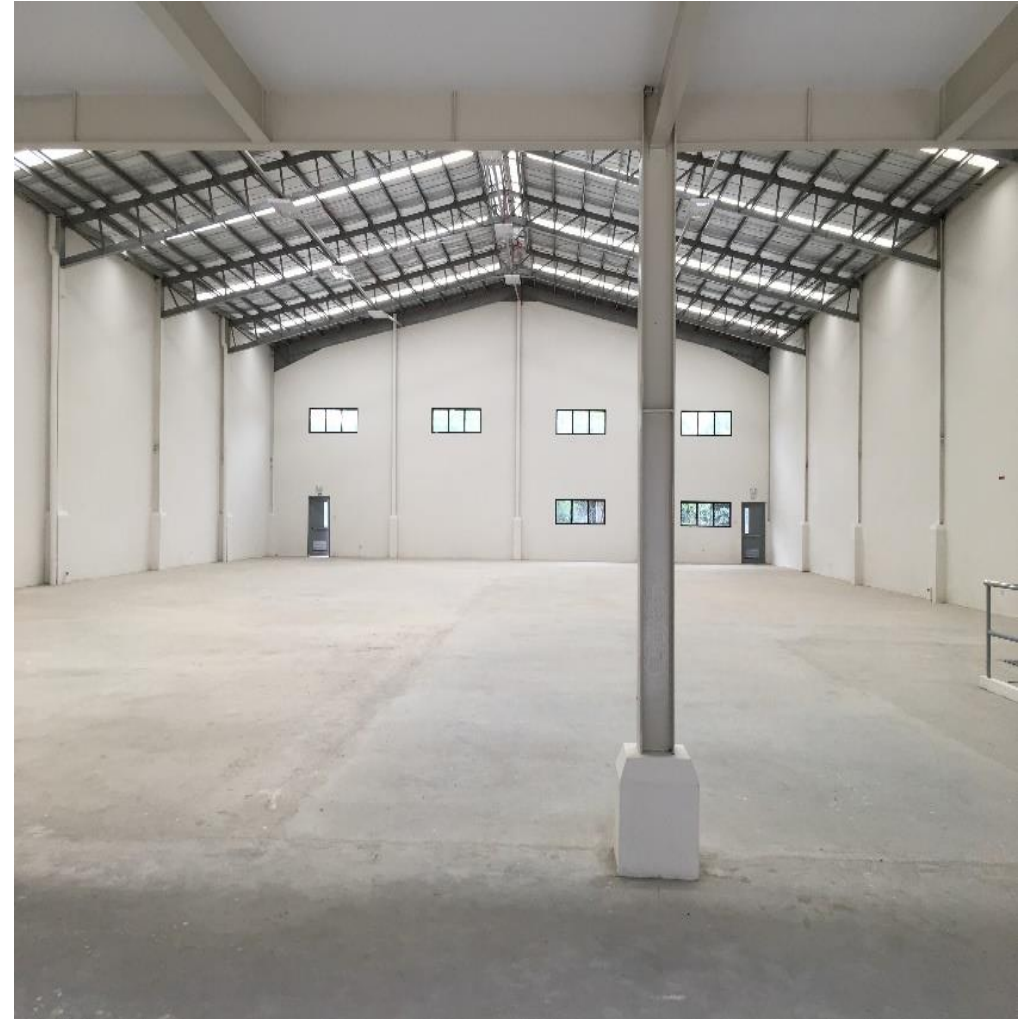
# Building Specifications

FEATURES	DETAILS
Land Area	<b>24,506 square meters</b>
Gross Leasable Area (Building)	<b>13,396 square meter (12 units)</b>  ~ <b>800 to 1,100 square meters</b> (Ground Floor) ~ <b>106 to 130 square meters</b> (Mezzanine) ~ <b>72 square meters</b> (4 Parking space) (3meters x 6meters)
Floor Load	<b>1 ton / square meter</b>
Ceiling Height Production Office	<b>6.4 meters; Apex – 9.8 meters</b> <b>3 meters</b>
GLA per unit	~ <b>800 to 1,100 square meters</b> (Ground Floor) ~ <b>106 to 130 square meters</b> (Mezzanine) ~ <b>72 square meters</b> (4 Parking space) (3meters x 6meters)
Restrooms	<b>1 facility in Ground Floor</b> -Male: 2 urinals / 2 cubicles / 2 wash bins -Female: 2 cubicles / 2 wash bins -PWD: 1 urinal / 1cubicle / 1 wash bin <b>1 facility in Mezzanine</b> -Male: 2 urinals / 1 cubicle / 2 wash bins -Female: 2 cubicles / 2 wash bins -PWD: 1 urinal / 1 cubicle / 1 wash bin
Power Supply	- Basic Cabling Facilities for <b>25 kVA</b> requirement, 3-Phase - Individual metering with service entrance
Water Supply	<b>Industrial and Domestic supply</b> from local utility provider
Used Water	Tap to existing <b>Centralized Sewage Treatment</b> plant by local utility provider

# Building Specifications

FEATURES	DETAILS
Utility Room	Provision for a <b>3m x 3m</b> utility room per unit
Fire Protection	Centralized Water Cistern with motor pump, Wet Stand pipe, Siamese Connection <b>Fire Alarm Notifier</b> , FDAS
Fire Wall	<b>Fire wall</b> provided at every units
Ventilation	<b>Roof ventilators</b>
Lighting	<ul style="list-style-type: none"><li>- <b>High bay lighting</b> for production area</li><li>- <b>Standard lighting</b> for office area</li><li>- Provision for <b>sky light or wall light</b> for natural illumination</li></ul>
Loading Bay	Each <b>loading bay</b> with: -4 m (width) x 4.5 m (height) roll up doors DEMAG single cylinder hydraulic dock leveler of <u>13 tons capacity</u>
Others	<b>Perimeter fence</b> (with perimeter lights) – 2 meters in height 0.5 meter CHB plus 1.5 meter metal grills fence (front) Two Guard Houses – 1 for entrance and 1 for exit with an area of 2m x 2m each Entrance/Exit sliding gates – five (5) meters each gate Ceiling: Office area: Non-sag acoustic board on oven baked t-runners

# Photos





# Photos

